

Specification GR 900-TUA from Catalog 1978

Precision Tuner

Used to match out small residual reflections in low-SWR measuring instruments and devices. The tuner has three smoothly adjustable tuning screws that are used in pairs to tune out reflections of any phase throughout the tuner's frequency range. Each screw has a "neutral" setting, independent of frequency, at which it is effectively out of the circuit. Screws can be locked at any setting to enhance the excellent SWR resettability and to protect against accidental disturbance. They can be partially clamped for the desired friction.

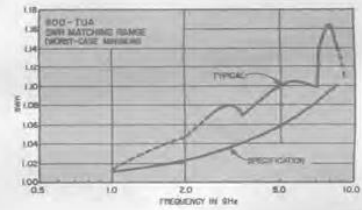
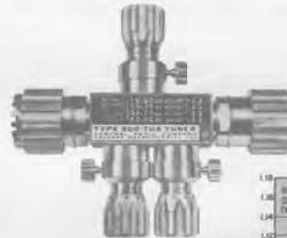
Frequency: 1 to 8.5 GHz.

SWR Matching Range: 1.00 to $1.00 + 0.012 f_{\text{GHz}}$, worst-case minimum. **RESETTABILITY:** $<(1.0005 + 0.0003 f_{\text{GHz}})$.

Repeatability: 0.05% (limited by connector).

Electrical: IMPEDANCE: 50 Ω nominal. **INSERTION LOSS:** <0.1 dB to 4 GHz, <0.3 dB to 8.5 GHz. **ELECTRICAL LENGTH:** 12.0 cm.

Mechanical: DIMENSIONS: 4.5x3.5x1 in. (114x89x25mm). **WEIGHT:** 1 lb (0.5 kg) net, 3 lb (1.4 kg) shipping.



900-TUA Tuner

0900-9635